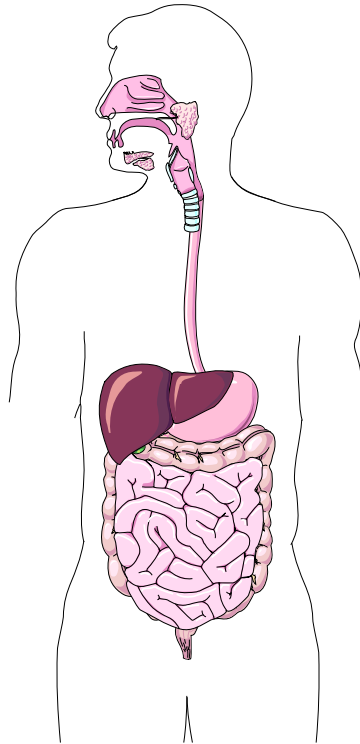


The digestive physically and chemically breaks down food so that it can be absorbed into our bloodstream. Any food that does not get absorbed is excreted as faeces.

Labels

Mouth	Salivary glands
Liver	Oesophagus
Stomach	Large intestine
Colon	Small intestine
Anus	Alimentary canal
Gall bladder	



Key Words

Saliva	Faeces
Digestion	Cholera
Bile	Absorption
Gall bladder	Bowel
Emulsify	Ulcer
Physical processes	
Chemical processes	

Research Ideas

- What is the function of saliva?
- How long does it take food to be digested?
- Which organ produces bile, and what is its function?
- Digestion of food is both a physical and chemical process. Name two examples of each.
- How does digested food pass into our blood?

Advanced Research

- How long is the alimentary canal?
- What is cholera? Describe its effects on the body.
- Describe the treatment for 'twisted bowel'.
- Outline the causes and treatment of ulcers in the digestive system.

Presentation Ideas

Design a wall display with diagrams and facts. Make sure your titles are big and bold, and that your work is as neat as possible.

Give a talk to your class. Prepare some diagrams (maybe on overheads) to help illustrate your presentation.

Internet Search Terms

(we recommend "google.com")

- "food takes" + hours + digested
- digestion + "salivary amylase"
- food + absorption
- "digestive system"
- bile + function + production

Websites

- <http://www.alternativehealthtalk.com/anatomy.htm>
- http://en.wikipedia.org/wiki/Gastrointestinal_tract
- http://en.wikipedia.org/wiki/Digestive_system
- <http://www.cdc.gov/travel/cholera.htm>
- <http://www.umm.edu/digest/ulcers.htm>
- <http://en.wikipedia.org/wiki/Stomach>