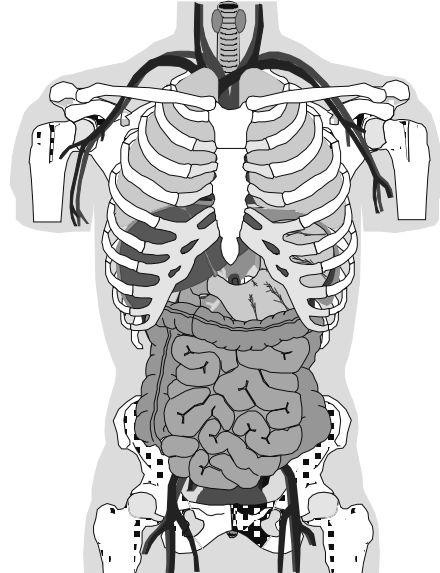


## Parts of the Body

- a. Cut out the picture of the torso, and stick it on a new page in your book.
- b. Label the diagram using the words below.

Small Intestine	
Large Intestine	
Windpipe (Trachea)	
Ball and socket joint	
Lung	
Stomach	
Ribs	Liver
Collarbone	Bowel
Humerus	Breastbone
Femur	Veins
Pelvis	Arteries



### Functions

Identify the body part that matches each of these functions and descriptions.

This organ has a large number of functions including the production of bile and enzymes.	These protect the heart and lungs, and help with the breathing process.
This organ stores and mechanically churns food. Contains acid.	This carries air to and from our lungs.
This organ passes <i>Oxygen</i> into the blood and removes <i>CO<sub>2</sub></i> .	This allows two bones to move in relation to each other.
This organ absorbs digested food into the blood.	This stores solid waste until it is excreted.
The largest bone in the human body.	This is where water is absorbed into the blood.
These carry blood towards the heart.	These carry blood away from the heart.