

BRAINTEASER 1

A farmer is returning from market where he has bought a ewe, a wolf and a cabbage. On the way home he must cross a river. His boat is small, only allowing him to carry one of the three things across at a time.

He can't leave the ewe with the cabbage as she will eat it. Nor can he leave the wolf with the ewe as it will bite her.

How will the farmer reach the other side, while making sure all three things are safe?



CATCHPHRASES 1

1

HOUSE
PRAIRIE

2

S
T
ONE

3

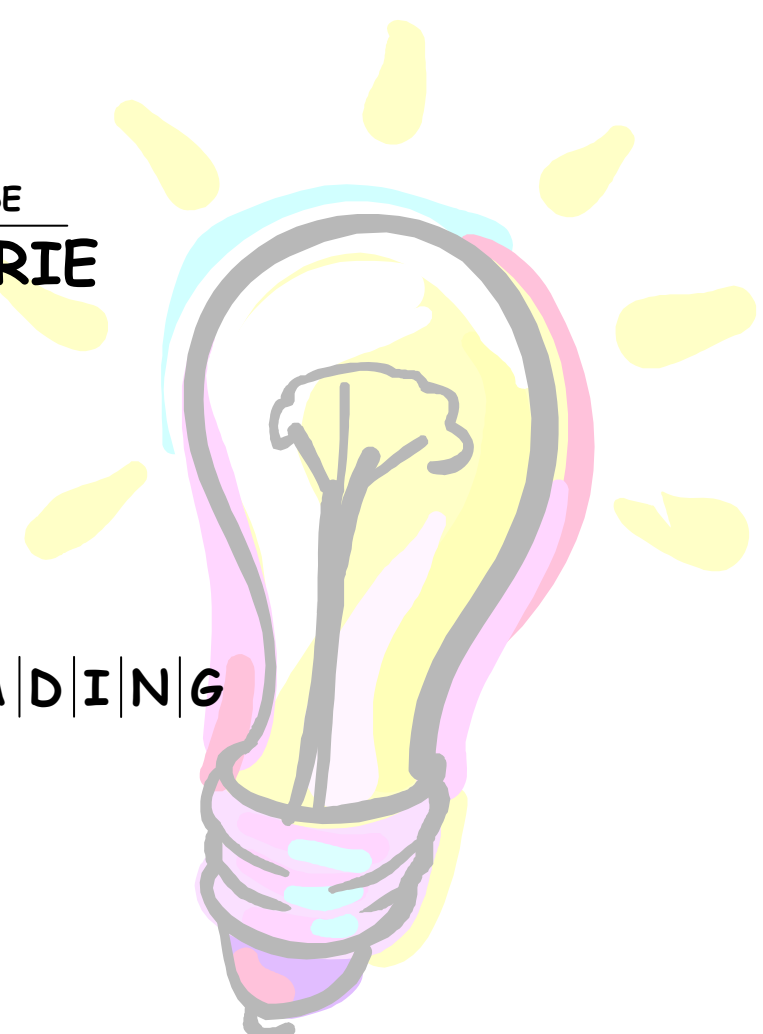
R | E | A | D | I | N | G

4

BEND
DRAW
DRAW

5

ONMLKJIH



ABOUT CATCHPHRASES

A catchphrase is a well-known saying or word. Look at the above questions and just say what you see. The following example will help you out.

MIND
MATTER

=

MIND OVER
MATTER

TRUTH OR FICTION 1

Elves and pixies both live together on a strange island. There is only one way to tell them apart: elves always tell the truth and pixies always lie.

Three locals, Alan, Bob and Chris, are at the market.

A tourist walks up and asks Alan:

"Are you an elf or a pixie?"

Alan mumbles something, so the tourist asks Bob:

"What did he say?"

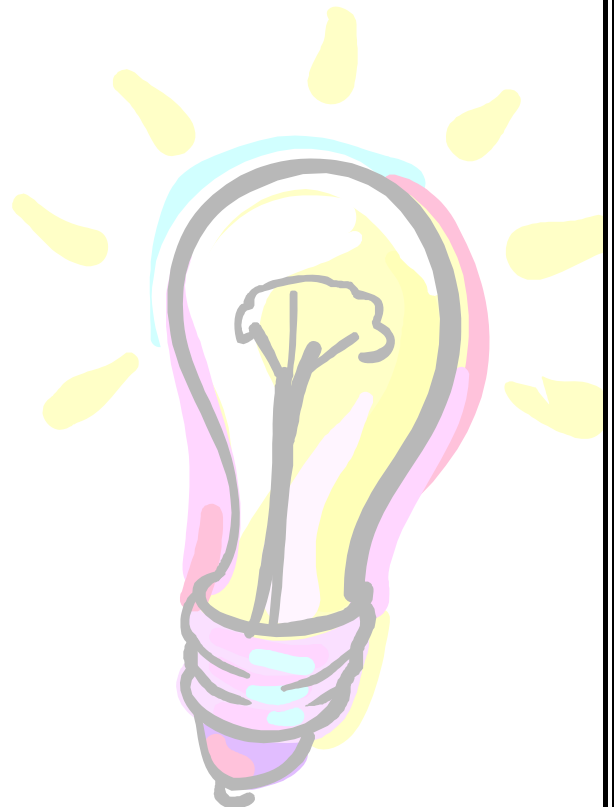
Bob replies:

"Alan said that he is a pixie."

Chris then pipes up:

"Don't listen to Bob, he's lying!"

Are Bob and Chris elves or pixies?



BRAINTEASER 1

SOLUTION

How will the farmer transport the ewe, cabbage and wolf over to the other side, while making sure they stay safe?

He takes the ewe over first, then returns on his own. He takes the wolf over second and returns with the ewe. He drops the ewe off on the first side and crosses the river with the cabbage. He leaves the cabbage with the wolf then returns one more time to pick up the ewe.



CATCHPHRASES 1

SOLUTIONS

1

Little house on the prairie

2

Corner stone

3

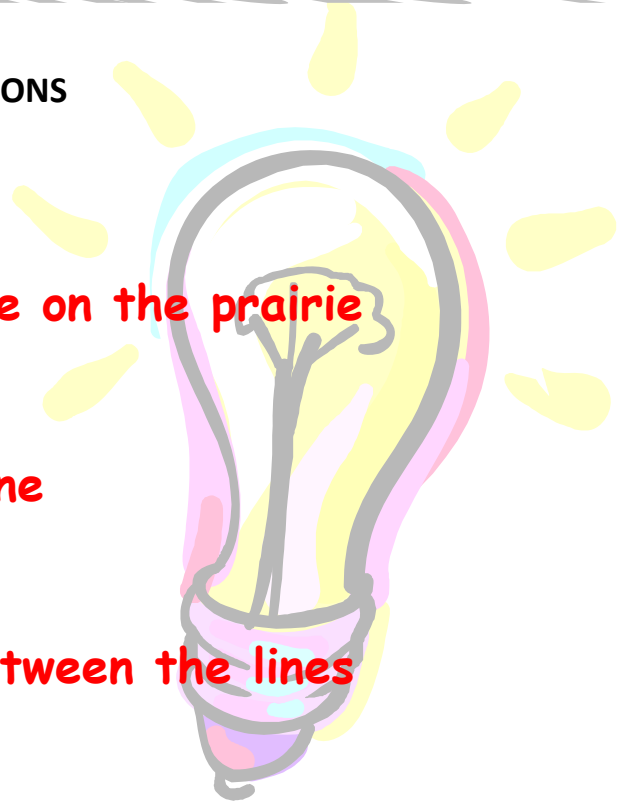
Reading between the lines

4

Bend over backwards

5

Backwater



ABOUT CATCHPHRASES

A catchphrase is a well-known saying or word. Look at the above questions and just say what you see. The following example will help you out.

MIND
MATTER

=

MIND OVER
MATTER

TRUTH OR FICTION 1

Elves and pixies both live together on a strange island. There is only one way to tell them apart: elves always tell the truth and pixies always lie.



Bob has to be lying, as Alan, regardless of whether he was a pixie or an elf, could not say "I am a pixie." (if he was a pixie he would be telling the truth, and if he was an elf he would be lying).

This means that Bob is lying and is therefore a pixie and that Chris is an elf.