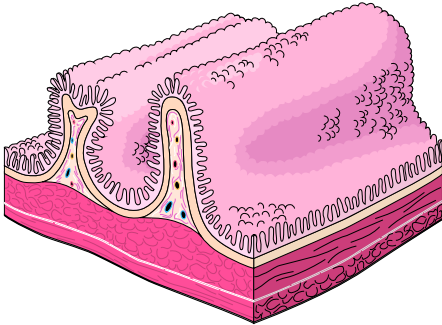


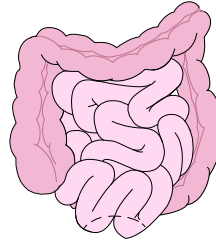
Small Intestine

The small intestine is designed to continue the digestion of food from the stomach. It then passes the tiny food molecules to the bloodstream.



Labels

Villus
Capillary network
Lacteal
Epithelial cells
Artery
Vein
Lymphatic vessel
Muscle
Small intestine
Large intestine



Key Words

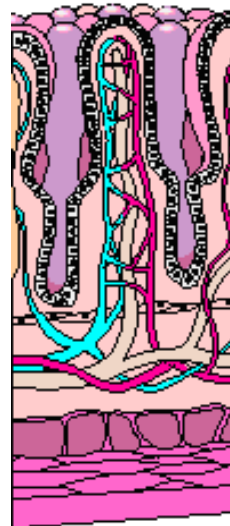
Duodenum	Vitamins
Jejunum	Minerals
Ileum	Proteins
Epithelium	Carbohydrates
Absorption	Fats
Pancreatic juice	Fibre
Bile	Electrolytes
Enzymes	

Research Ideas

- How long is the human intestine?
- Which substances are digested in the small intestine?
- How does absorption into the blood take place?
- What types of food are not absorbed into the blood?
- How is cancer of the intestine treated?

Advanced Research

- How is food moved along the small intestine?
- What is the function of 'intestinal juice'?
- How is the surface area of the small intestine increased?
- Find out about some diseases of the small intestine.



Presentation Ideas

Design a wall display with diagrams and facts. Make sure your titles are big and bold, and that your work is as neat as possible.

Give a talk to your class. Prepare some diagrams (maybe on overheads) to help illustrate your presentation.

Internet Search Terms

(we recommend "google.com")

- "small intestine" + length
- "small intestine" + function
- "small intestine" + cancer
- intestine + disease
- intestine + fats + protein

Websites

- http://kidshealth.org/kid/body/digest_noSW_p2.html
- <http://arbl.cvmb.colostate.edu/hbooks/pathphys/digestion/smallgut/>
- <http://www.bbc.co.uk/schools/ks3bitesize/science/biology/>
- <http://en.wikipedia.org/wiki/Digestion>
- http://en.wikipedia.org/wiki/Small_intestine
- http://en.wikipedia.org/wiki/Gastrointestinal_tract